

IAS Series

Stainless steel ISO A couplers made to the ISO 7241:2023 Series A Standard dimensions

Introduction

AKJia's IAS series stainless steel ISO A couplers incorporate all the benefits of the carbon steel IA Series couplers, while being perfectly suited for corrosive fluids and environments.

Construction

- AISI 304 Stainless Steel, and also available 316 stainless steel
- Fitted with Viton seals - FKM (Other seals available on request)
- Also available in carbon steel (See IA Series)

Features

- Poppet valves have balanced springs
- Locking ball system allows for quick connection
- Bidirectional flow

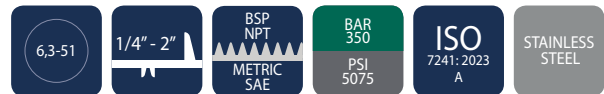
Application

- Corrosive fluids and environments
- Marine
- Oil and gas
- Chemical
- Pharmaceutical
- Nuclear



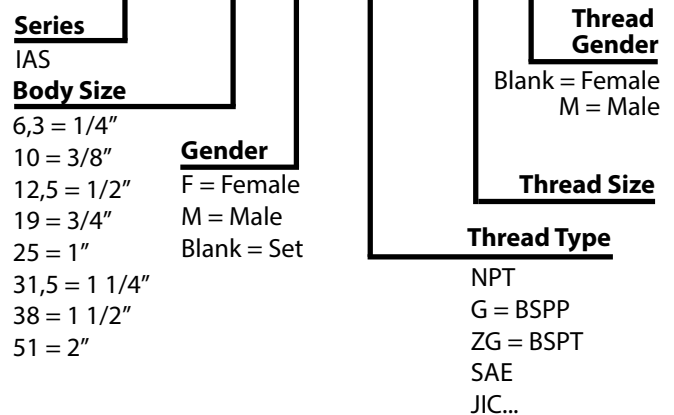
Specifications

Seal Material	Min. Temp		Max. Temp	
FKM (Viton) seals	-20°C	-4°F	200°C	392°F

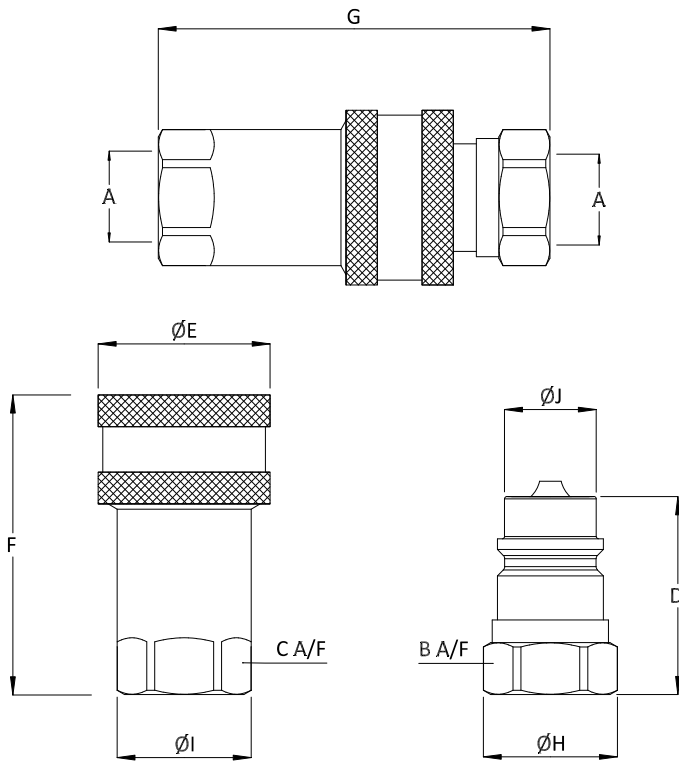


Product Number Naming Rules

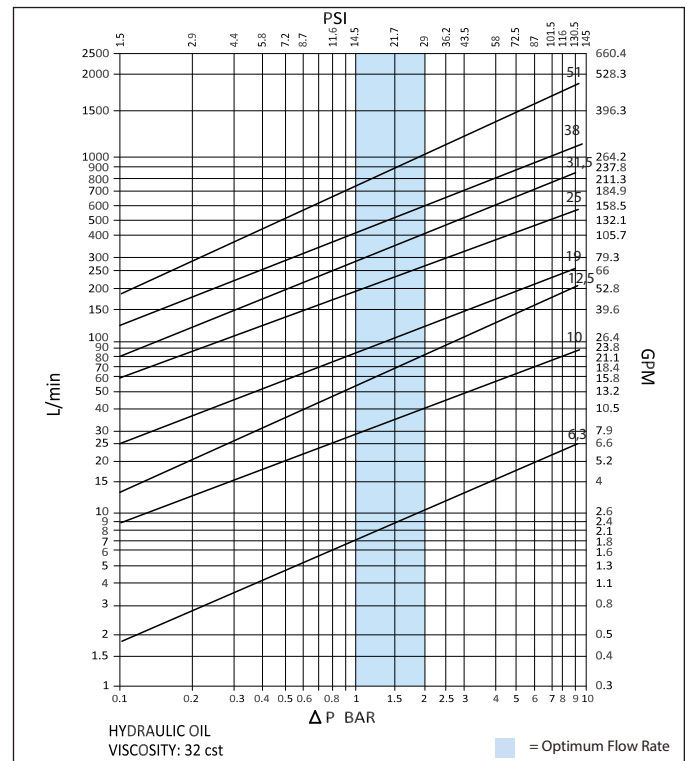
IAS - 6,3 F NPT 1/4



Drawing



Pressure Drop Characteristics



Size	Thread Size (A)	B	C	D	ØE	F	G	ØH	ØI	ØJ	Maximum Working Pressure	Burst Pressure (coupled)	Burst Pressure (Male)	Burst Pressure (Female)
		Dimensions in mm									Bar			
		Dimensions in inches									Psi			
IAS-6,3	1/4"	19	19	35.5	26	49.5	71	21	21	11.8	300	900	950	900
		0.7	0.7	1.4	1	1.9	2.8	0.8	0.8	0.5	4350	13050	13775	13050
IAS-10	3/8"	22	22	36.5	31.5	56	75	24	24	17.2	250	750	820	750
		0.9	0.9	1.4	1.2	2.2	3	0.9	0.9	0.7	3625	10875	11890	10875
IAS-12,5	1/2"	27	27	43.5	38.5	66	88	30	30	20.5	250	750	820	750
		1.1	1.1	1.7	1.5	2.6	3.5	1.2	1.2	0.8	3625	10875	11890	10875
IAS-19	3/4"	35	35	57	47	80	111	38	38	29	250	750	820	750
		1.4	1.4	2.2	1.9	3.1	4.4	1.5	1.5	1.1	3625	10875	11890	10875
IAS-25	1"	41	41	60	55.5	94	120	44.5	44.5	34.2	200	600	650	600
		1.6	1.6	2.4	2.2	3.7	4.7	1.8	1.8	1.3	2900	8700	9425	8700
IAS-31,5	1 1/4"	50	50	75	69	117	150	56	56	45	140	420	450	420
		2	2	3	2.7	4.6	5.9	2.2	2.2	1.8	2030	6090	6525	6090
IAS-38	1 1/2"	60	60	83.5	84	131	168.5	63	66	55	140	420	470	420
		2.4	2.4	3.3	3.3	5.2	6.6	2.5	2.6	2.2	2030	6090	6815	6090
IAS-51	2"	75	75	105	99	165	211.5	83	83	65	90	270	300	270
		3	3	4.1	3.9	6.5	8.3	3.3	3.3	2.6	1305	3915	4350	3915