

LC Series

Heavy duty screw connect couplers

Introduction

Screw-to-connect couplings of the LC Series from AKJia consist of a female body with a winged screw sleeve and a male tip with external thread.

Coupling (screwing) and uncoupling (unscrewing) of the two halves is safe and very easy. After the connection is complete, all internal components have minimal play or clearance, which significantly reduces the risk of material fatigue.

Construction

- Carbon steel with trivalent plating
- Fitted with Nitrile seals
- Cast steel heavy duty sleeve

Features

- Inspection hole enables check of complete connection between both halves
- Screw connect design eliminates brinelling
- Hard wearing heavy duty sleeve
- Bidirectional flow

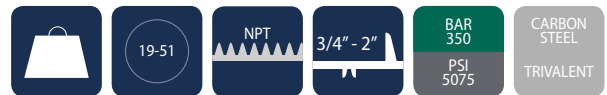
Application

- Heavy duty applications
- High pressure pulse applications

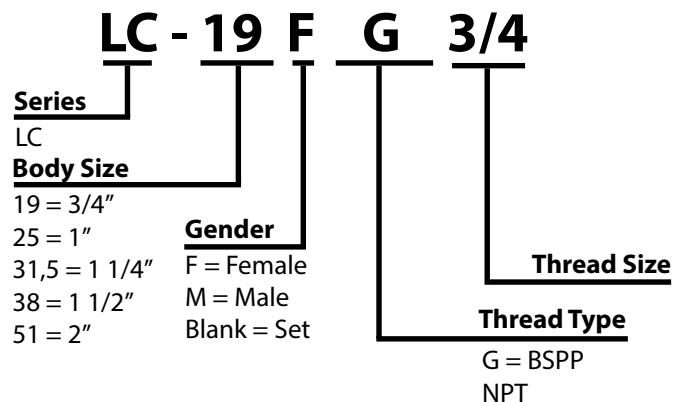


Specifications

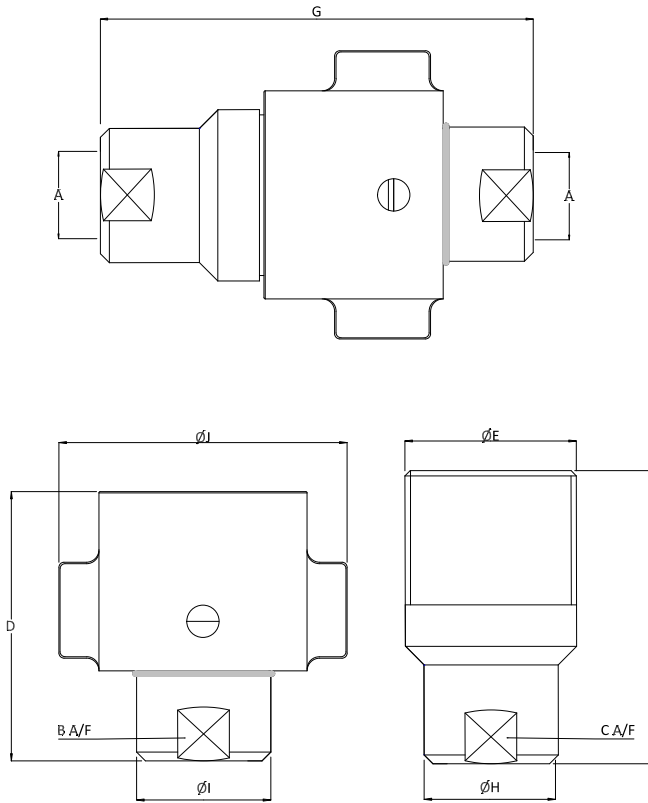
Seal Material	Min. Temp		Max. Temp	
Nitrile seals*	-40°C	-40°F	106°C	223°F



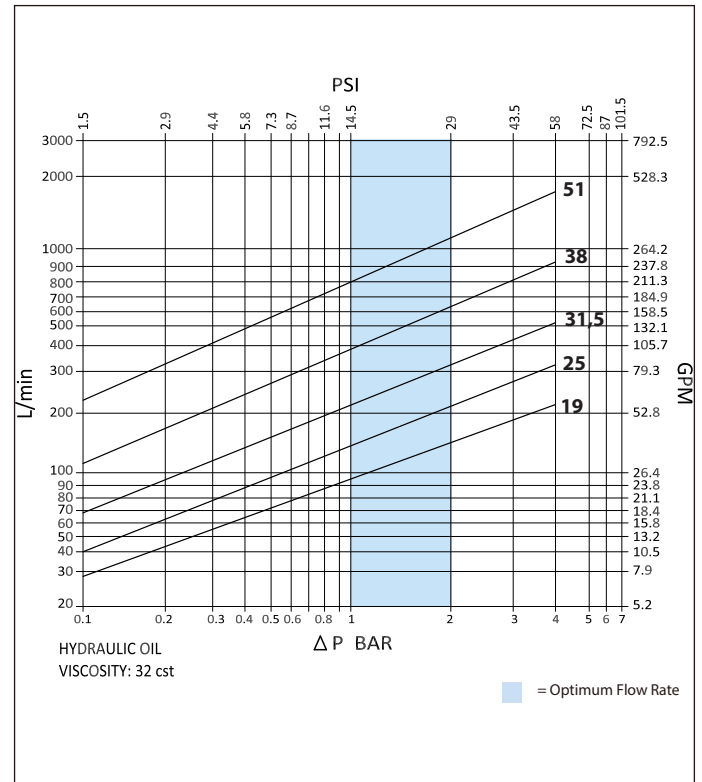
Product Number Naming Rules



Drawing



Pressure Drop Characteristics



Size	Thread Size (A)	D	ØE	F	G	ØH	ØI	ØJ	Maximum Working Pressure	Burst Pressure (coupled)	Burst Pressure (Male)	Burst Pressure (Female)
									Dimensions in mm			
									Bar			
									Dimensions in inches			
									Psi			
LC-19	3/4"	70	44.5	83	124	32	32	82.5	345	1380	1380	1380
		2.8	1.8	3.3	4.9	1.3	1.3	3.2	5000	20010	20010	20010
LC-25	1"	87	57	106	153.5	41	41	102	345	1380	1380	1380
		3.4	2.2	4.2	6	1.6	1.6	4	5000	20010	20010	20010
LC-31,5	1 1/4"	109	66.5	136	198	50	50	119	345	1050	1050	1050
		4.3	2.6	5.4	7.8	2	2	4.7	5000	15225	15225	15225
LC-38	1 1/2"	128.5	82.5	150	220	58	58	138	345	1050	1050	1050
		5.1	3.2	5.9	8.7	2.3	2.3	5.4	5000	15225	15225	15225
LC-51	2"	152	101.5	179	255	75	75	170	345	1050	1050	1050
		6	4	7	10	3	3	6.7	5000	15225	15225	15225