

QC Series

Swagelok QC Interchange Instrumentation Quick-Connects

Introduction

The AKJia's QC series Instrumentation Quick Connectors are designed for service in a large variety of applications, with a max. working pressure of up to 3,000 psi (206 bar). Interchangeable and intermixable with major manufacturers' Instrumentation Quick Connectors.

Construction

- Available in 1/8" to 1/2" size
- Connect under pressure at 250 psi
- SUS316 Stainless Steel Material
- Fluorocarbon FKM O-Rings as standard, other O-rings are available per request

Features

- Valved and non-valved stems available
- Working pressure rating: up to 3,000 psig (206 bar)
- Interchangeable and intermixable with major manufacturers' Instrumentation Quick Connectors
- Push-to-connect coupling enables quick, easy operation.
- Wide variety of options, including keyed quick-connects, are available.
- Locking dog mechanism with large contact area retains stem.

Application

- Gauge Calibration
- Sampling System
- Portable Test Equipment
- Laboratory Equipment
- Gas Distribution
- Biopharmaceutical



6,3-10

5-12,5

NPT
BSP

BAR
207
PSI
3000

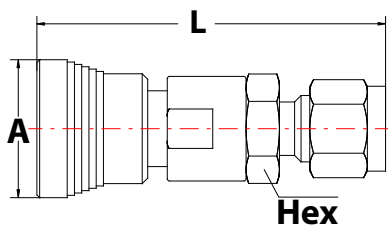
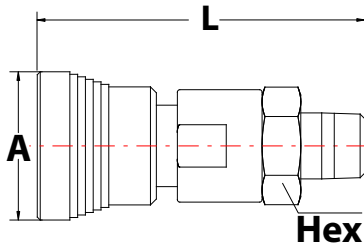
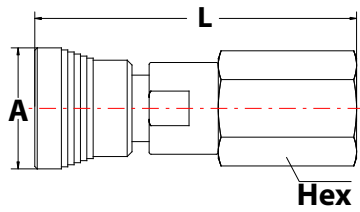
STAINLESS
STEEL

Specifications

Seal Material	Min. Temp		Max. Temp	
FKM (Viton) seals	-20°C	-4°F	200°C	392°F

Size	Pressure Rating Coupled		Maximum Flow Rate	
	psi	bar	l/min	US.gal/min
QC4	3000	206	15	4
QC6	1500	103	22	6
QC8	750	51.6	37	10

Drawing



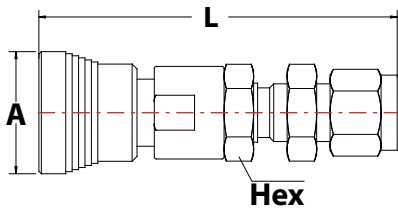
Series	Fitting Size	Ordering Code	Thread	A	L	Hex
QC4	1/8"	QC4-F NPT 1/8	NPT 1/8 Female	23.4	54.9	16
QC4	1/4"	QC4-F NPT 1/4	NPT 1/4 Female	23.4	61.5	16
QC6	3/8"	QC6-F NPT 3/8	NPT 3/8 Female	26.2	65.3	20
QC8	1/2"	QC8-F NPT 1/2	NPT 1/2 Female	30.7	81.8	22
QC4	1/8"	QC4-F G 1/8	BSPP 1/8 Female	23.4	54.9	16
QC4	1/4"	QC4-F G 1/4	BSPP 1/4 Female	23.4	61.5	16
QC6	3/8"	QC6-F G 3/8	BSPP 3/8 Female	26.2	65.3	20
QC8	1/2"	QC8-F G 1/2	BSPP 1/2 Female	30.7	81.8	22

Series	Fitting Size	Ordering Code	Thread	A	L	Hex
QC4	1/8"	QC4-F NPT 1/8 M	NPT 1/8 Male	23.4	51.1	16
QC4	1/4"	QC4-F NPT 1/4 M	NPT 1/4 Male	23.4	54.9	16
QC6	3/8"	QC6-F NPT 3/8 M	NPT 3/8 Male	26.2	60.5	20
QC8	1/2"	QC8-F NPT 1/2 M	NPT 1/2 Male	30.7	75.4	23.8
QC4	1/8"	QC4-F G 1/8 M	BSPP 1/8 Male	23.4	51.1	16
QC4	1/4"	QC4-F G 1/4 M	BSPP 1/4 Male	23.4	54.9	16
QC6	3/8"	QC6-F G 3/8 M	BSPP 3/8 Male	26.2	60.5	20
QC8	1/2"	QC8-F G 1/2 M	BSPP 1/2 Male	30.7	75.4	23.8

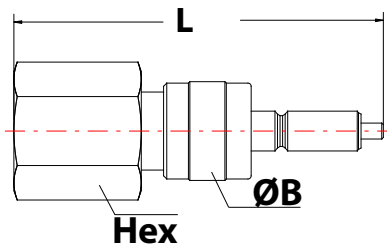
Series	Fitting Size	Ordering Code	A	L	Hex
QC4	1/8"	QC4-F L 1/8	23.4	57.4	16
QC4	1/4"	QC4-F L 1/4	23.4	58.4	16
QC6	3/8"	QC6-F L 3/8	26.2	65.5	20
QC8	1/2"	QC8-F L 1/2	30.7	78.5	23.8
QC4	6 mm	QC4-F L 6MM	23.4	58.4	16
QC6	10 mm	QC6-F L 10MM	26.2	68.1	20
QC8	12 mm	QC8-F L 12MM	30.7	78.5	23.8

Hydraulic Quick Coupling

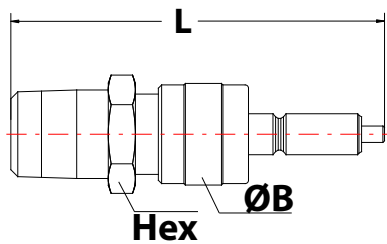
Drawing



Comlock Quick Coupling



Ball Valves

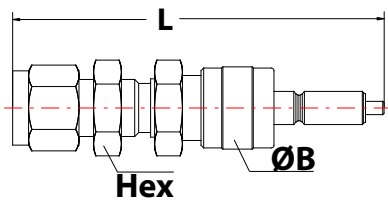
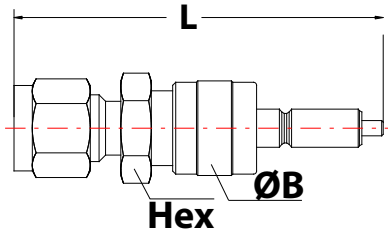


Series	Fitting Size	Ordering Code	A	L	Hex
QC4	1/4"	QC4-F LB 1/4	23.4	67.8	16
QC6	3/8"	QC6-F LB 3/8	26.2	75.7	20
QC8	1/2"	QC8-F LB 1/2	30.7	90.4	23.8
QC4	6 mm	QC4-F LB 6MM	23.4	67.8	16
QC6	10 mm	QC6-F LB 10MM	26.2	75.9	22
QC8	12 mm	QC8-F LB 12MM	30.7	90.4	23.8

Series	Fitting Size	Ordering Code	Thread	ØB	L	Hex
QC4	1/8"	QC4-M NPT 1/8	NPT 1/8 Female	15.7	52.6	16
QC4	1/4"	QC4-M NPT 1/4	NPT 1/4 Female	15.7	58.9	20
QC6	3/8"	QC6-M NPT 3/8	NPT 3/8 Female	18.8	62.7	22
QC8	1/2"	QC8-M NPT 1/2	NPT 1/2 Female	18.8	76.7	27
QC4	1/8"	QC4-M G 1/8	BSPP 1/8 Female	15.7	52.6	16
QC4	1/4"	QC4-M G 1/4	BSPP 1/4 Female	15.7	58.9	20
QC6	3/8"	QC6-M G 3/8	BSPP 3/8 Female	18.8	62.7	22
QC8	1/2"	QC8-M G 1/2	BSPP 1/2 Female	18.8	76.7	27

Series	Fitting Size	Ordering Code	Thread	ØB	L	Hex
QC4	1/8"	QC4-M NPT 1/8 M	NPT 1/8 Male	15.7	54.1	16
QC4	1/4"	QC4-M NPT 1/4 M	NPT 1/4 Male	15.7	57.9	16
QC6	3/8"	QC6-M NPT 3/8 M	NPT 3/8 Male	18.8	62.7	20
QC8	1/2"	QC8-M NPT 1/2 M	NPT 1/2 Male	18.8	77.2	23.8
QC4	1/8"	QC4-M G 1/8 M	BSPP 1/8 Male	15.7	54.1	16
QC4	1/4"	QC4-M G 1/4 M	BSPP 1/4 Male	15.7	57.9	16
QC6	3/8"	QC6-M G 3/8 M	BSPP 3/8 Male	18.8	62.7	20
QC8	1/2"	QC8-M G 1/2 M	BSPP 1/2 Male	18.8	77.2	23.8

Drawing



Series	Fitting Size	Ordering Code	Thread	ØB	L	Hex
QC4	1/8"	QC4-M L 1/8	NPT 1/8 Male	15.7	59.9	16
QC4	1/4"	QC4-M L 1/4	NPT 1/4 Male	15.7	61.5	16
QC6	3/8"	QC6-M L 3/8	NPT 3/8 Male	18.8	67.1	20
QC8	1/2"	QC8-M L 1/2	NPT 1/2 Male	23.8	80.3	23.8
QC4	6 mm	QC4-M L 6MM	BSPP 1/4 Male	15.7	61.5	16
QC6	10 mm	QC6-M L 10MM	BSPP 3/8 Male	18.8	67.1	20
QC8	12 mm	QC8-M L 12MM	BSPP 1/2 Male	23.8	80.3	23.8

Series	Fitting Size	Ordering Code	Thread	ØB	L	Hex
QC4	1/4"	QC4-M LB 1/4	NPT 1/4 Male	15.7	71.1	16
QC6	3/8"	QC6-M LB 3/8	NPT 3/8 Male	18.8	78	20
QC8	1/2"	QC8-M LB 1/2	NPT 1/2 Male	23.8	92.2	23.8
QC4	6 mm	QC4-M LB 6MM	BSPP 1/4 Male	15.7	71.1	16
QC6	10 mm	QC6-M LB 10MM	BSPP 3/8 Male	18.8	78	22
QC8	12 mm	QC8-M LB 12MM	BSPP 1/2 Male	23.8	92.2	24