



HSC SERIES

HEAVY DUTY SCREW CONNECT COUPLERS ROFLEX

HSC Series heavy screw connect couplers are designed for heavy-duty, high pressure pulse applications. They are built to withstand the most severe pressure pulses, where other couplers may fail, due to the design preventing the movement of internal components.



Series HSC // Carbon Steel

Material	Carbon Steel
Surface Finishing	Zinc-Plating
Standard Seal Material(s)	NBR (Buna-N®) ²
Working Temperature	-25° C ... +100° C / -13° F ... +212° F
Valve Design	Poppet
Connection	Screw sleeve to connect
Disconnection	Screw sleeve
Connect Under Pressure	Can be connected with low residual pressure in the hydraulic circuit
Application	Construction Machinery
ISO Interchange	-

² Alternative seal materials are available on request.

Features

- Once connected all internal parts are held rigid which significantly reduces fatigue of the poppet, spring and coupler body
- Can be connected and disconnected under pressure
- All internal components are replaceable

Applications

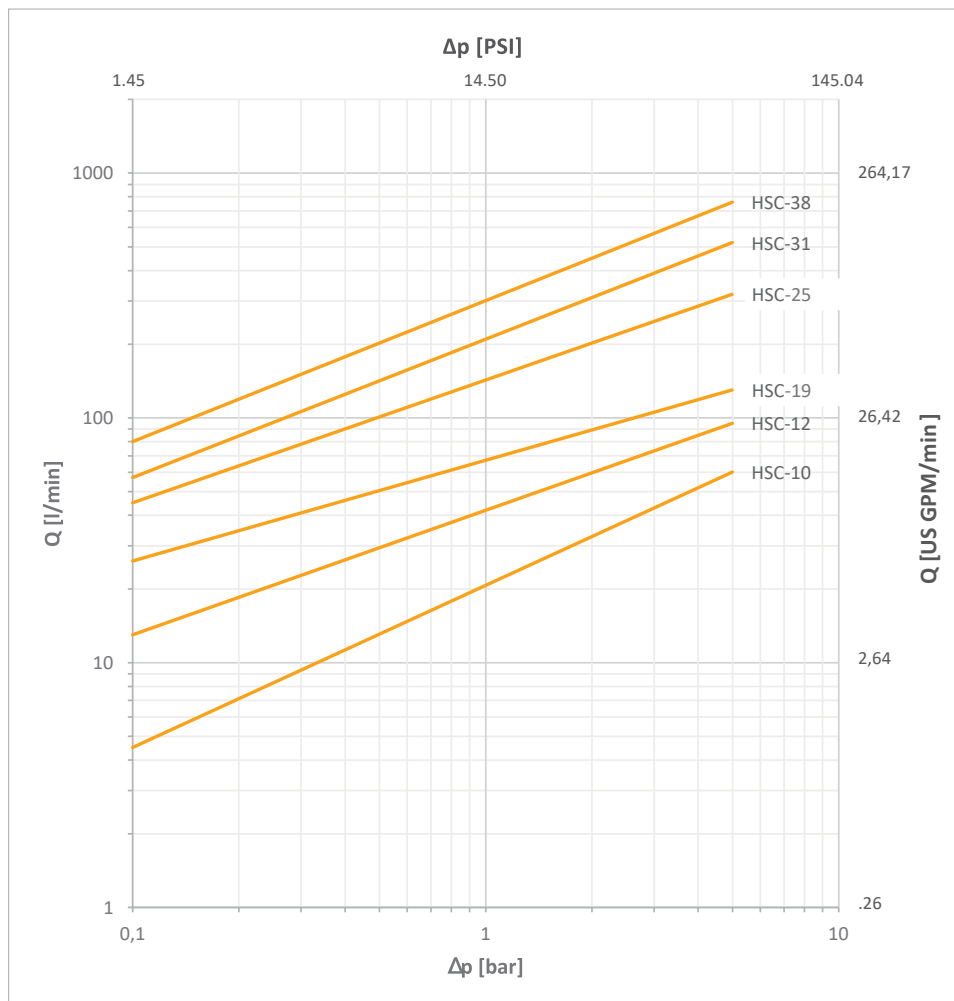
- Hammer circuits
- Shears
- rock crushers
- test rigs
- other intense pressure pulse applications



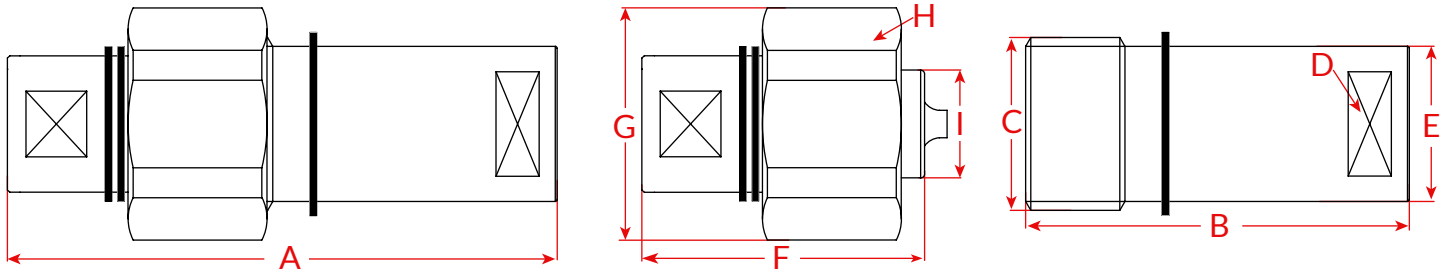
Technical Data

Series	DN Inch	DN Metric	Q _{max}		Working Pressure		bursting puresure coupled		female body		male tip		spillage ml
			l/min	US GPM	bar	psi	bar	psi	bar	psi	bar	psi	
HSC-10	3/8"	10	50	13.21	610	8847	2450	35534	2450	35534	2600	37710	2
HSC-12	1/2"	12,5	85	22.45	470	6817	1900	27557	2100	30458	1650	23931	3
HSC-19	3/4"	19	120	31.70	400	5802	1250	18130	1500	21756	1250	18130	10
HSC-25	1"	25	280	73.91	400	5802	1300	18855	1600	23206	1100	15954	16
HSC-31	1 1/4"	31	460	121.52	320	4641	1300	18855	1300	18855	1200	17405	30
HSC-38	1 1/2"	38	700	184.92	300	4351	1100	15954	1500	21756	950	13779	54

Flow Characteristics



Dimensions



Series	Size	Thread	Overall Length	F. Length	Thread	SW	O.D	M. Length	O.D	Hex	O.D	Weight (g)	
			A	B	C	D	E	F	G	H	I	Female	Male
HSC-10	3/8"	3/8"	112	77	36	22	30	57	48	45	22	318	352
HSC-12	1/2"	1/2"	135	95	40	26	34	70	53	50	26	484	480
HSC-19	3/4"	3/4"	142	99.5	44.7	30	39	73	63	60	26	660	599
HSC-25	1"	1"	157.5	106	58	40	52	81	80	77	36.8	1179	1147
HSC-31	1 1/4"	1 1/4"	171.5	118	66	48	60	88	91	88	47	1606	1803
HSC-38	1 1/2"	1 1/2"	176	121	75	55	69	90	96	93	57	2006	2184

Dimensions in mm

The dimensions based on the BSPP Thread, other threads the dimensions would be different, please contact us for more information.

Code Rules

HSC - 10 F G3/8

①
②
③
④

- ① Series - HSC
- ② Body Size, 10 = 3/8", 12 = 1/2", ... 38 = 1 1/2"
- ③ Part, F = Female Coupler, M = Male Nipple, Blank = Set(Female+Male)
- ④ Thread Type and Size, the default thread is BSPP thread, G3/8", G1/2" etc.

