



## TC SERIES

### EU Market Wet-line Tipper Trucks Screw to connect Wing Nut Quick Couplings

TC Series Screw to Connect Quick Couplings are specifically designed for high-performance and reliability in demanding hydraulic applications, particularly for tipper trucks, commercial vehicle trailers, and other heavy-duty transport equipment. They are widely used in the wet-line products, especially in EU Market. And also use WSC series in wet-line products in US and other market.



## Series TC // Carbon Steel

<b>Material</b>	Carbon Steel
<b>Surface Finishing</b>	Zinc-Nickel, Zinc-Plating
<b>Standard Seal Material(s)</b>	NBR (Buna-N®) <sup>2</sup>
<b>Working Temperature</b>	-25° C ... +100° C / -13° F ... +212° F
<b>Valve Design</b>	Poppet Valve
<b>Connection</b>	Screw
<b>Disconnection</b>	Screw
<b>Connect Under Pressure</b>	can be connected with up to 50 bar residual pressure in the hydraulic circuit
<b>Application</b>	Hydraulic tippers, commercial vehicle trailers, agricultural and construction equipment
<b>ISO Interchange</b>	-

<sup>2</sup> Alternative seal materials are available on request.

## Features

- Screw connect design eliminates brinelling
- Wing nut sleeve design allows connect by hand
- can be connected with up to 50 bar residual pressure in the hydraulic circuit
- Male has external thread for bulkhead mounting

## Applications

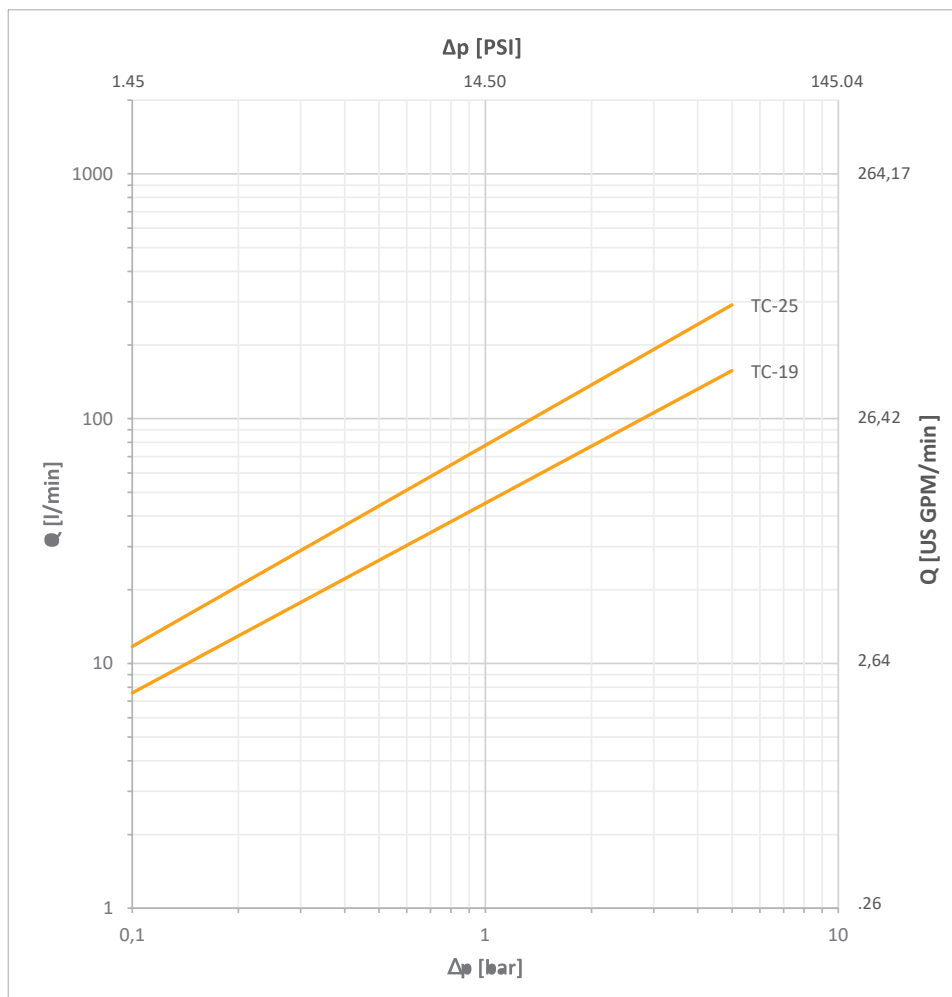
- Hydraulic tippers
- Commercial vehicle trailers
- Agricultural
- Construction equipment
- Wet-line kits



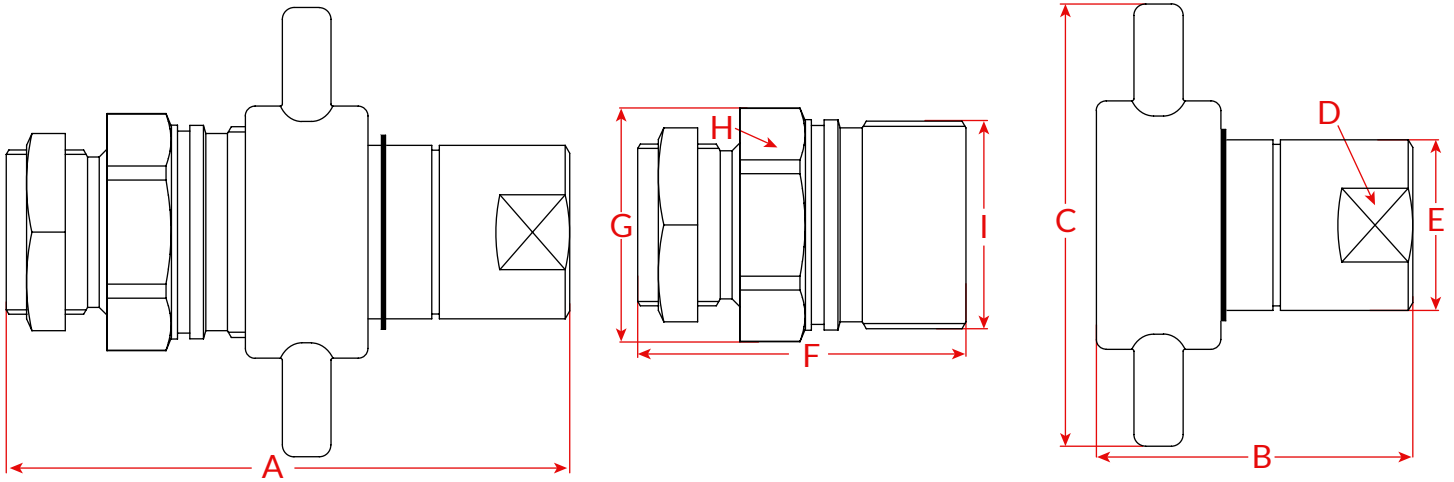
## Technical Data

Series	DN Inch	DN Metric	Q <sub>max</sub>		Working Pressure		bursting puresure coupled		female body		male tip		spillage ml
			l/min	US GPM	bar	psi	bar	psi	bar	psi	bar	psi	
TC-19	3/4"	19	159	42.0	350	5076	1300	18855	1000	18855	1000	14504	10
TC-25	1"	25	283.5	74.89	300	4351	1000	14504	1000	14504	1000	14504	15

## Flow Characteristics



## Dimensions



Series	Size	Thread	Overall Length	F. Length	Width	SW	O.D	M. Length	O.D	Hex	O.D	Weight (g)	
			A	B	C	D	E	F	G	H	I	Female	Male
TC-19	3/4"	3/4"	132.5	74.5	114	33	37	78	51.5	46	44.5	197	88
TC-25	1"	1"	144.8	80	114	40	44	83.5	60.5	55	53.5	344	155

Dimensions in mm

The dimensions based on the BSPP Thread, other threads the dimensions would be different, please contact us for more information.

## Code Rules

TC - 19 F G3/4

①
②
③
④

- ① Series - TC
- ② Body Size, 19 = 3/4", 25 = 1"
- ③ Part, F = Female Coupler, M = Male Nipple, Blank = Set(Female+Male)
- ④ Thread Type and Size, BSPP- G 3/4, G1, NPT 3/4

