



IAP SERIES

ISO A CONNECT UNDER PRESSURE FEMALE COUPLERS

AKJia's IAP Series ISO A female couplers are designed primarily for the agricultural industries and incorporate a push-pull design. The coupler can be either panel mounted using circlip grooves or manifold mounted.



Series IAP // Carbon Steel

Material	Carbon Steel
Surface Finishing	Zinc-Plating
Standard Seal Material(s)	NBR (Buna-N®), PTFE, ²
Working Temperature	-25° C ... +100° C / -13° F ... +212° F
Valve Design	Poppet Valve
Connection	Push
Disconnection	Pull
Connect Under Pressure	Female Body with ISO-A Male Tip up to the max. Working Pressure allowed
Application	Agricultural and Forestry Machinery
ISO Interchange	ISO 7241-1 Series A, Size 12,5

² Alternative seal materials are available on request.

Features

- Can be connected with residual pressure in the line
- Can be connected with standard ISO A or ISO 5675 1/2" male couplers (IA Series)
- Release mechanism protects coupler and hose from damage in event of accidental separating force
- Push-Pull Design easy to connect and disconnect
- Protective zinc plating with clear trivalent chromate finish
- Locking ball system allows quick connection

Applications

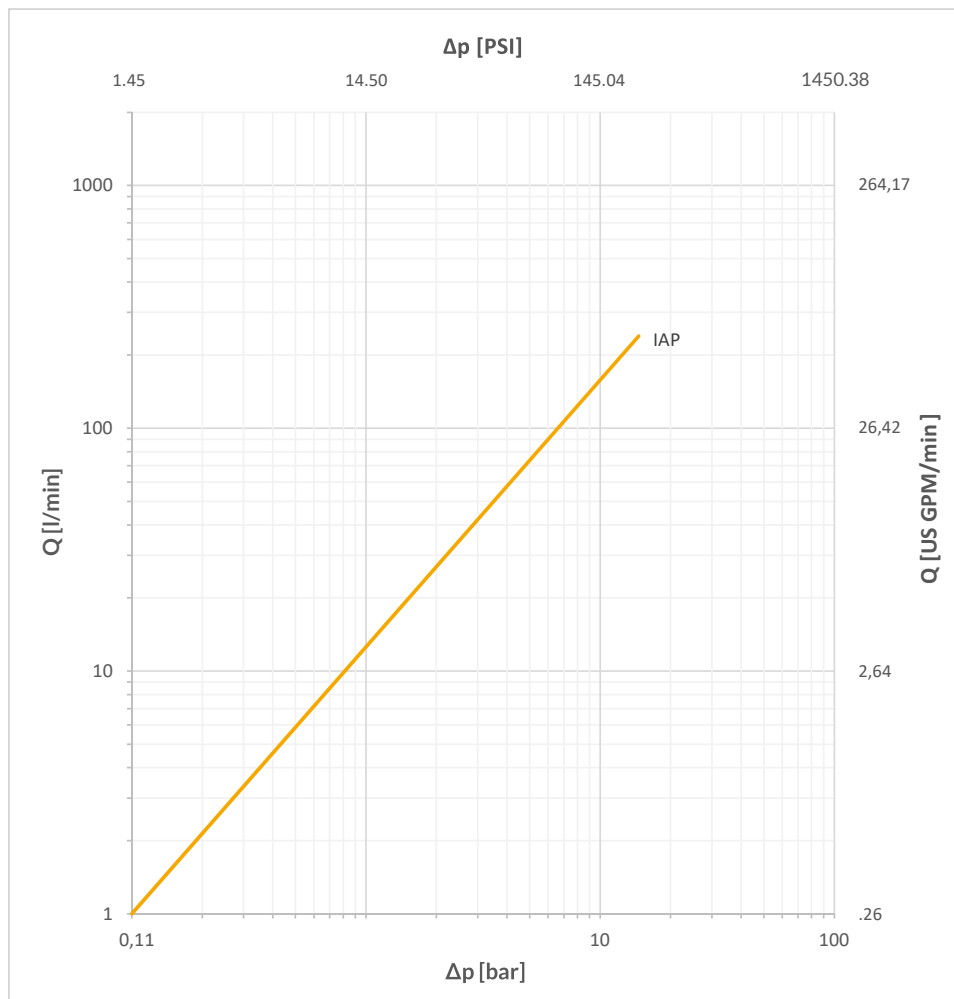
- Agricultural
- Mobile applications
- Construction
- general industrial



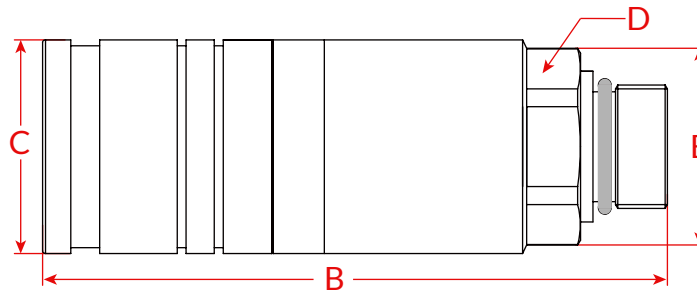
Technical Data

Series	DN Inch	DN Metric	Q _{max}		Working Pressure		bursting puresure coupled		female body		male tip		spillage ml
			l/min	US GPM	bar	psi	bar	psi	bar	psi	bar	psi	
IAP-12	1/2"	12,5	100	21.13	250	3626	1000	14504	1000	14504	1000	14504	1.7

Flow Characteristics



Dimensions



Series	Size	Thread	F Length	O.D	Hex	O.D	Weight (g)	
			B	C	D	E	Female	Male
IAP-12	1/2"	M22x1.5	49.5	26	19	21	106	37
IAP4-12	1/2"	M22x1.5	56	31.5	22	24	155	59
IAP-12	1/2"	NPT1/2	66	38.5	27	30	268	97

Dimensions in mm

IAP Series is the connect under pressure ISO A Female coupler. The IAP-12 is interchangeable with Faster 3CFPV Series, Connectable with male half under residual pressure. And the IAP4 is a special designed interchangeable with Faster 4SFPV, that the female coupler is connectable with both the male and female half both under residual pressure. The IAP-12 F M22x1.5 is the OEM replacement for John Deere, RE255758, AL166181, AL200979. And the IAP4-12 M22x1.5 is the OEM replacement for John Deere AL112951, AL200979, AL200979P, AL221083. Of course, they also use in other machinery, like Fiat, New Holland, please see the detail product page.

Code Rules

IAP - 12 F M22x1.5 M

①
②
③
④

- ① Series - IAP or IAP4
- ② Body Size, 12 = 1/2"
- ③ Part, F = Female Coupler
- ④ Thread Type and Size, The M22x1.5 Male thread is most popular in the applications of the machine like John Deere, New Holland, Fiat etc.



Dust Caps



Size	Female Body
1/2"	DC-IA-12 F

The IAP series also complies with the ISO7241 Series A standard, so the dust cap is the same as the IA series.

