



LC SERIES

Snap-Tite 75 Series Interchange Wing Nut Style Screw To Connect Quick Couplings

LC Series screw to connect quick coupling consist of a female body with a winged screw sleeve and a male tip with external thread. LC Series is is suitable for use in oil and gas industry as well as mobile equipment and heavy duty transportation, especially where high pressures, high flow and pulse pressure are present. LC Series heavy-duty ACME thread design for durable connection strength and a heavy-duty poppet valve design that prevents seal washout under operating parameters.



Series LC // Carbon Steel

Material	Carbon Steel
Surface Finishing	Zinc-Plating
Standard Seal Material(s)	NBR (Buna-N®) ²
Working Temperature	-25° C ... +100° C / -13° F ... +212° F
Valve Design	Poppet Valve
Connection	Screw
Disconnection	Screw
Connect Under Pressure	Male Tip and Female Body up to max. 100 bar / 1450 PSI allowed
Application	oil and gas industry, mobile equipment, heavy duty transportation
ISO Interchange	-

² Alternative seal materials are available on request.

Features

- Screw Connect design eliminates brinelling
- Hard wearing heavy duty sleeve
- Inspection hole enables check of complete connection between both halves
- Zinc-plating and thick-film-passivation (chrome III)
- Can be connect under pressure up to 100 bar (1450 PSI)

Applications

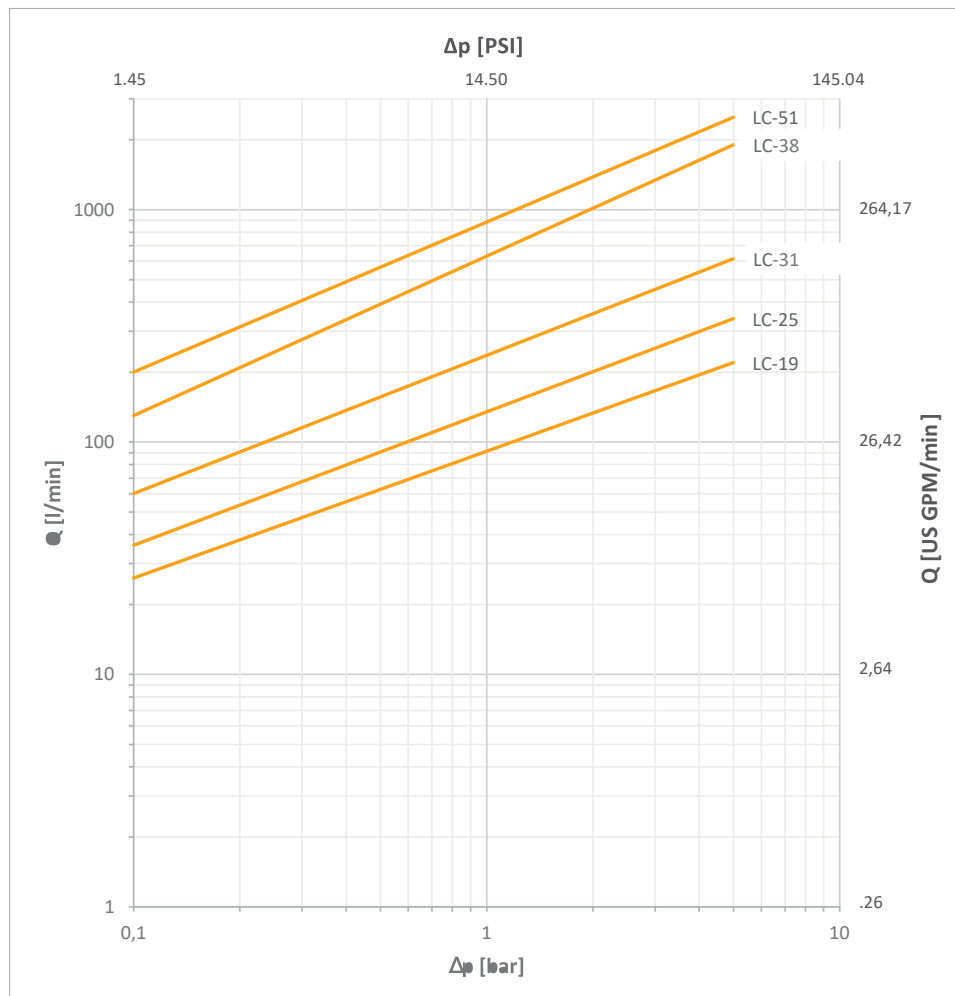
- High Pressure Pulse Application
- Oil and Gas industry
- Mobile equipment
- Heavy duty transportation



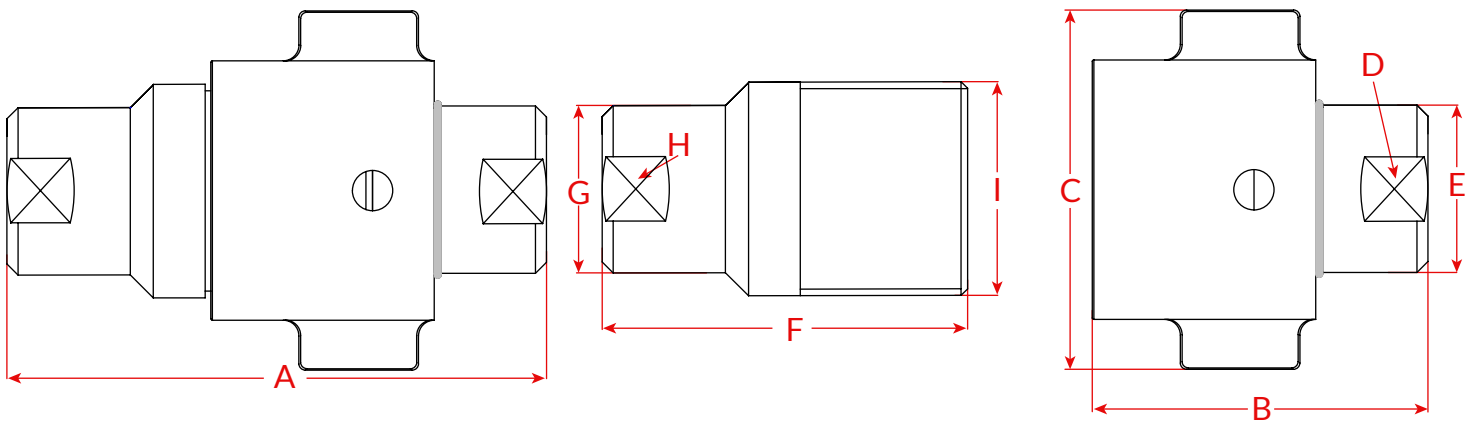
Technical Data

Series	DN Inch	DN Metric	Q _{max}		Working Pressure		bursting pressure coupled		female body		male tip		spillage ml
			l/min	US GPM	bar	psi	bar	psi	bar	psi	bar	psi	
LC-19	3/4"	19	190	50.19	350	5076	1500	21756	750	10878	1400	20305	8
LC-25	1"	25	280	73.97	350	5076	1600	23206	900	13053	1500	21756	16
LC-31	1 1/4"	31,5	480	126.80	350	5076	1300	18855	850	12328	1600	23206	31
LC-38	1 1/2"	38	700	184.92	350	5076	1200	17405	600	8702	900	13053	64
LC-51	2"	51	1000	264.17	350	5076	1100	15954	500	7252	600	8702	141

Flow Characteristics



Dimensions



Series	Size	Thread	Overall Length	F. Length	Width	SW	O.D	M. Length	O.D	Hex	O.D	Weight (g)	
			A	B	C	D	E	F	G	H	I	Female	Male
LC-19	3/4"	3/4"	124	70	82.5	29	32	83	32	29	83	475	835
LC-25	1"	1"	153.5	87	102	38	41	106	41	38	106	1036	1438
LC-31	1 1/4"	1 1/4"	198	109	119	47	50	136	50	47	136	1720	2390
LC-38	1 1/2"	1 1/2"	220	128.5	138	55	58	150	58	55	150	3000	3975
LC-51	2"	2"	255	152	170	72	75	179	75	72	170	5410	7820

Dimensions in mm

The dimensions based on the BSPP Thread, other threads the dimensions would be different, please contact us for more information.

Code Rules

LC - 19 F G3/4

① ② ③ ④

- ① Series - LC
- ② Body Size, 19 = 3/4", 25 = 1", 31=1 1/4", 38 = 1 1/2"
- ③ Part, F = Female Coupler, M = Male Nipple, Blank = Set(Female+Male)
- ④ Thread Type and Size, BSPP- G 3/4, G1, NPT 3/4...

